



Marylebone Road, Marylebone, London, NW1

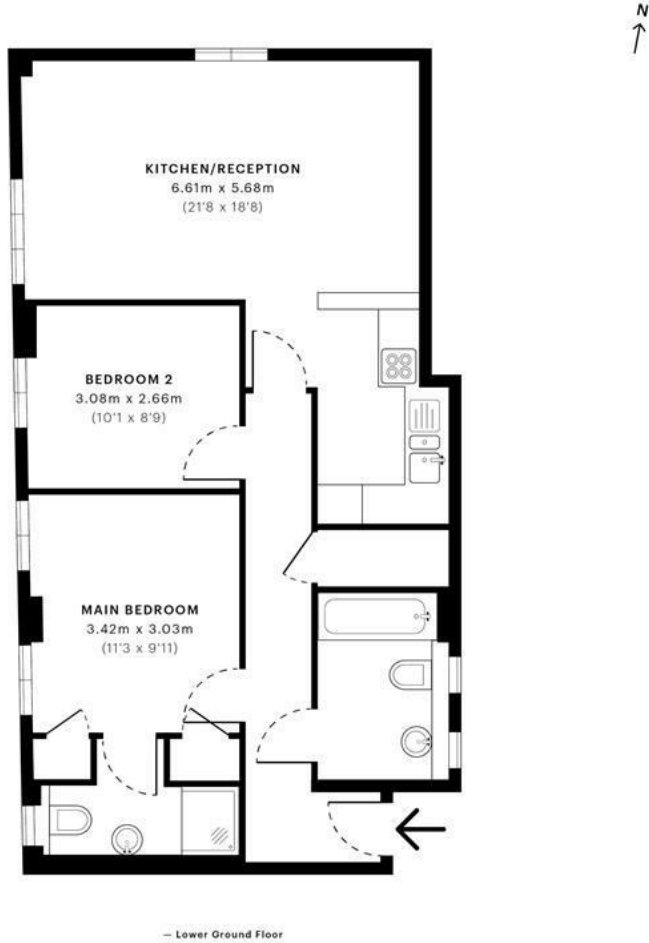
£519 Per Week

VIDEO VIEWING: Stylish two bedroom lower ground floor apartment located within the sought after Harley House development. This property comprises a large living area, a modern open plan kitchen, two good size double bedrooms and two bathrooms (one en-suite). Further benefiting from high ceilings, brand new wood flooring throughout, access to communal garden and 24 hour concierge with the added security of having CCTV and a gated entrance to Harley House.

Offered furnished, Students and Professionals welcome.

Harley House is a secure, portered block located within a short walk from the world class selection of shops, bars and restaurants of Marylebone High Street. Excellent transport links are provided by numerous bus routes, Baker Street and Regents Park underground stations and the A40 (M) for motorists.

- Two Double Bedrooms
- Two Bathrooms (One Ensuite)
- 24/7 Porter
- Open Plan Kitchen
- Spacious Reception
- Approx 708 Sq. Ft.
- High Ceilings
- Access To Communal Garden & Close To Regents Park



GROSS INTERNAL AREA (GIA)
The footprint of the property
65.81 sqm / 708.37 sqft

NET INTERNAL AREA (NIA)
Excludes walls and external features
Includes washrooms, restricted head height
62.92 sqm / 677.27 sqft

EXTERNAL STRUCTURAL FEATURES
Balconies, terraces, verandas etc.
0.00 sqm / 0.00 sqft

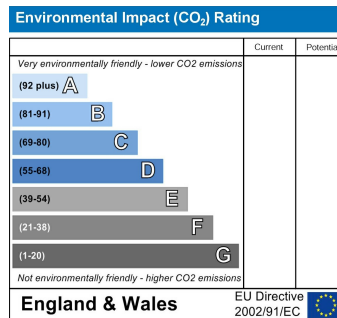
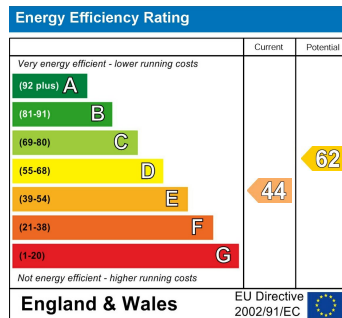
RESTRICTED HEAD HEIGHT
Limited use area under 1.5m
0.00 sqm / 0.00 sqft



Spec Verified floor plans are produced in accordance with Royal Institution of Chartered Surveyors' Property Measurement Standards. Plots and gardens are illustrative only and excluded from all area calculations. Due to rounding, numbers may not add up precisely. All measurements shown for the individual room lengths and widths are the maximum points of measurements captured in the scan.

IPMS 3B RESIDENTIAL 67.78 sqm / 728.58 sqft
IPMS 3C RESIDENTIAL 65.07 sqm / 700.41 sqft

spec id : 608ad07a4048510dde6a7ccfd



Admin fee: £ inclusive of VAT | Reference Fee: £ inclusive of VAT per application | Inventory Fee may also apply